

Your Source for the BEST Values in Industrial Electrical Enclosures

ENCLOSURES

Aluminum

Stainless Steel

Increased Safety

Fiberglass



ATEX

IEC



ADALET
A SCOTT FETZER COMPANY

A Total Solution For Industrial Electrical



ALUMINUM ENCLOSURES

APPLICATIONS

- Recommended for indoor or outdoor use.
- Suited for areas where enclosures are exposed to high levels of moisture, solvents, petrochemicals, most sulfates and nitrates, salt, chemicals, corrosive elements or continuously wet environments exist.

CONSTRUCTION

- Made from Aluminum (Type 5052-H32)
- Continuous hinge and mounting feet fastened by mechanical clinching (eliminating welding)

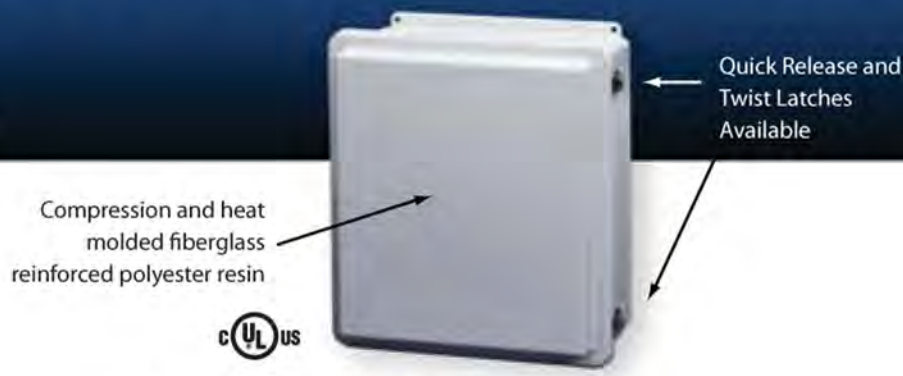
AVAILABLE MODELS

JIC Continuous Hinge Cover
Single Door

CUSTOMIZATION

Ask about custom sizes, modifications and a wide variety of available options

- Special sizes and designs
- Floor stands
- Holes and cutouts
- Louvers
- Installed operators
- Special paint
- Door latches and hardware
- Studs, weld nuts & press inserts
- Terminal blocks & DIN Rails
- Silk screening
- Breathers/Drains
- Window kits
- Drip and Sun shields



FIBERGLASS ENCLOSURES

APPLICATIONS

- Recommended for indoor or outdoor use.
- Suited for use in areas where extreme temperatures and direct sunlight exist.
- Suited for areas where salt, chemicals, corrosive elements or continuously wet environments exist.
- Most models carry a NEMA 6P rating for temporary water submersion.

CONSTRUCTION

- Compression and heat molded, fiberglass reinforced polyester resin
- Continuous urethane cover gasket
- Superior temperature limits and impact resistance

AVAILABLE MODELS

Pushbutton

- Designed to fit most standard operators
- 1, 2, or 3 hole models standard - custom hole punching available

Flush Cover

- Designed to fit most standard operators

Screw Cover

- Stainless steel captive cover screws
- Stainless steel retaining chain
- Standard sizes ranging from 7" x 6" x 3" to 14" x 12" x 6"

Hinged Screw Cover

- Stainless steel captive cover screws
- Stainless steel continuous hinge
- Standard sizes ranging from 6" x 6" x 4" to 18" x 16" x 8"

Quick Release Latch-Flat & Raised Cover

- Stainless steel quick-release latches with padlock hasps
- Stainless steel continuous hinge
- Flat cover standard sizes ranging from 6" x 6" x 4" to 20" x 16" x 8"
- Raised cover standard sizes ranging from 8" x 6" x 6" to 20" x 16" x 10"

Twist Latch-Flat & Raised Cover

- Stainless steel twist latches with padlock hasps
- Stainless steel continuous hinge
- Flat cover standard sizes ranging from 6" x 6" x 4" to 20" x 16" x 8"
- Raised cover standard sizes ranging from 10" x 8" x 6" to 18" x 16" x 10"

And Explosionproof Enclosure Systems



Made from Type 304 or Type 316L with a #3-#4 brush finish



Continuous piano type hinge with removable SS hinge pin

Made from sheet steel or die cast aluminum



STAINLESS STEEL ENCLOSURES

APPLICATIONS

- Recommended for indoor or outdoor use.
- Provides protection from dirt, oil, dust and water.
- Suited for use in areas such as petrochemical plants, dairies, food processing areas and similarly wet environments.
- They are also designed for use in areas where severe corrosion problems exist.
- Suited for areas where caustic elements or alkalis are present.

CONSTRUCTION

- Made from Type 304 or Type 316L with a #3-#4 brush finish
- All seams continuously welded and ground to a smooth finish
- Folded lip around door opening for complete and maximum gasket contact as well as prevent liquids from dripping into enclosure when door is open

AVAILABLE MODELS

JIC Continuous Hinge

- Stainless steel continuous hinge
- Standard sizes ranging from 6" x 4" x 3" to 16" x 14" x 10"

JIC Lift-Off Cover

- Stainless steel clamping hardware
- Standard sizes ranging from 6" x 4" x 3" to 16" x 14" x 10"

Victory Series

- Streamlined design with a flush door and latches
- Designed with 1/4 turn latches and aluminum die-cast hinges
- Standard sizes ranging from 12" x 12" x 6" to 36" x 30" x 20"

Single Door

- Stainless steel continuous hinge
- Standard sizes ranging from 16" x 12" x 6" to 30" x 24" x 24"

INCREASED SAFETY ENCLOSURES

APPLICATIONS

- Recommended for indoor or outdoor use.
- Used to house electrical equipment that will not generate an arc or spark during normal operation.

CONSTRUCTION

- Made from sheet steel or die cast aluminum
- Designed to prevent the possibility of excessive heat, ingress of water or dust
- Highly impact resistant

AVAILABLE MODELS

Single Door Clamped

- Continuous piano type hinge with removable SS hinge pin
- Standard sizes ranging from 16" x 12" x 6" to 60" x 36" x 12"

Screw Cover Terminal

- Available in stainless, cast aluminum
- Standard sizes ranging from 5" x 5" x 3" to 16" x 16" x 8"

High Voltage Junction Boxes

- Box & cover ground studs, internal/external earthing stud and universal rail mounting system standard

Control Enclosures

- Designed to accommodate industry standard control devices
- Standard sizes ranging from 16" x 12" x 6" to 60" x 36" x 12"

Contractor Series

- 316L Stainless steel
- Removable gland plates for easy field modification
- Standard sizes ranging from 9" x 6" x 5" to 38" x 26" x 5"

RELY ON ADALET ENCLOSURES!

Engineered to withstand the challenges of the toughest industrial environments.

INTRINSICALLY SAFE ENCLOSURES

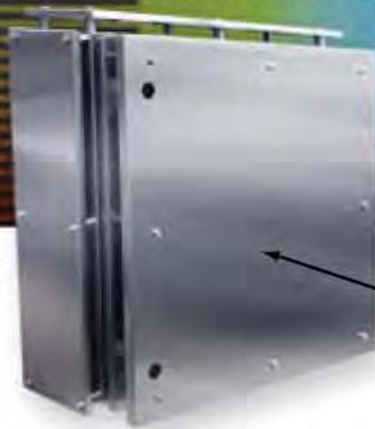
Designed to protect areas where flammable gases, vapors, liquids and dusts can exist.



Enclosures for Extreme Heat & High-Pressure Spray Applications



Shown with optional sun shields.



Seamless poured one-piece gasket

14 gauge Type 304
or
Type 316L stainless steel



Shown with optional locking handle and ventilation plate.

PUMPSTATION/LIFTSTATION & POWERWASH ENCLOSURES

Superior Protection from Extreme Solar Heat & High-Pressure Washdown

Extreme temperatures and high-pressure spray can compromise the performance of your processing systems and controls if they are not properly protected, and can be a factor in system failure. ADALET enclosures provide a secure level of protection for your systems with the certifications and safety standards your applications require. We have developed a comprehensive list of options that, until now, were only available as custom modifications. Creating and ordering your custom enclosure is as easy and fast as ordering a standard catalog product.

FEATURES

- 14 gauge Type 304 or Type 316L stainless steel
- Seams continuously welded and ground smooth
- Stainless steel concealed hinges with removable pins
- Hinges are shielded by door edges
- Stainless latches/quarter-turn latch furnished with flush slotted insert
- Panel studs for optional NEMA size panels
- External mounting feet
- Seamless, poured, one-piece gasket provides an oil-, water-, and dust-tight seal against contaminants (Polyurethane Foam (-10°C to +75°C) with Acrylic Tape (-40°C to +93°C))
- Installed gasket retainers
- Bonding provisions on door and body
- Furnished hardware kit consists of panel mounting nuts and grounding hardware



THERMOELECTRIC HEATER/COOLER

The ADALET line of enclosure heating/cooling products offers a worry-free way to protect your valuable equipment from the effects of extreme temperatures.

